



adapt

Designed for adjustability

- Sustainable tilt in space mobility base, to accommodate multiple conditions and changing postural needs.
- Proven industry-wide seat system compatibility.
- Durability, longevity, reusability.



Discover More



Enhancing access and independence for all

The foundation of manual wheelbase mobility: Chunc Adapt's modular design offers extensive customization options for clients who cannot maintain a symmetrical and unsupported sitting posture.

Adjustable components maintain the integrity of postural support while offering width and additional depth adjustments, allowing the system to grow with the existing user or be modified by a trained technician for a new client—delivering a lower lifetime cost.

Client profile

- Facilitates complex seating prescriptions: tailored solutions for unique postural and mobility requirements.
- Spinal injury, muscle diseases or cerebral palsy.
- Adaptive support for evolving requirements.
- Multiple environments: use at home, school, residential care, and day care settings.
- Indoor and outdoor use.



BOOK A FREE DEMO

Feature

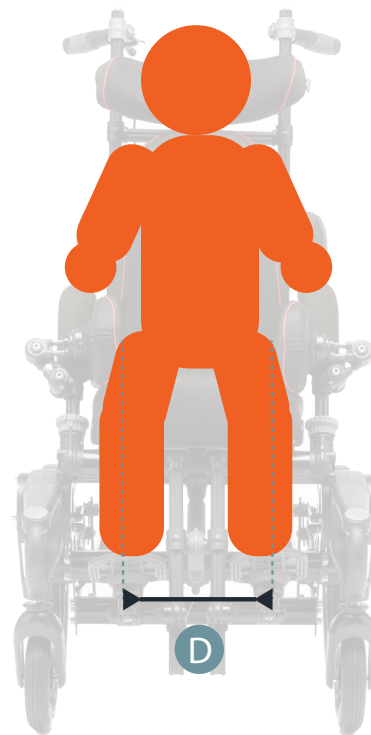
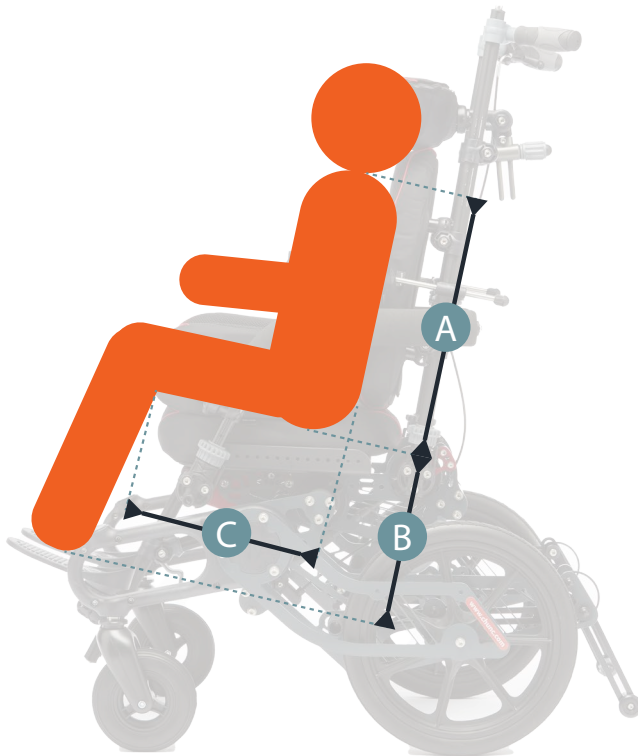
- Modular design, available in 4 sizes (XS, S, M, L) with growth adjustability.
- 45° Tilt Adjustment: support various seating positions, including hoisted transfers.
- Multi option mounting kit: fixed seat or rail mounting (15" & 18").
- Back rest inclination and width adjustment (up to 14").
- Options:
 - Push bar, pram handle.
 - Foot operated brake levers, drum brake assembly.
 - Leg supports swing away & angle adjustable, individual, foot box.
- Compact & manoeuvrable, 1.2m turning circle.
- Max load capacity 110kg/24 stone .

Benefits

- Optimal posture alignment, risk reduction, functional improvement and aesthetically pleasing design.
- 45° Tilt Adjustment; enhances comfort and accessibility, for individuals who may lack strength to change position.
- 45° change reduces pressure by up to 30%. Tilting at varying degrees throughout the day also provides relief.
- Back recline option up to 180°, to assist with personal care.
- Grows with your client and adapts to the evolving requirements of progressive conditions.
- Power assist option – confidence and freedom to do more.

Chair Dimensions and Sizing Guide

| SPECIFICATION | XS | SMALL | MEDIUM | LARGE |
|-------------------------------|-------------|-------------|-------------|-------------|
| Max User Mass | 110kg | 110kg | 110kg | 110kg |
| Seat Cushion Depth Range | 30-35cm | 35-40cm | 40-45cm | 45-50cm |
| Seat Width | 30cm | 35cm | 40cm | 45cm |
| Back Rest Height | 40cm | 45cm | 51cm | 57cm |
| Total Backrest Height Growth | 5cm | 5cm | 5cm | 5cm |
| Backrest Width | 25cm | 30cm | 31.5cm | 35cm |
| Leg Rest Angle Range | 80°-170° | 80°-170° | 80°-170° | 80°-170° |
| Leg Rest Length Range | 21-48cm | 21-48cm | 21-48cm | 21-48cm |
| Back Rest Recline Angle Range | 90-180° | 90-180° | 90-180° | 90-180° |
| Tilt in Space | +3° to -45° | +3° to -45° | +3° to -45° | +3° to -45° |



| XS | | |
|----|---------|------------|
| A | 36-44cm | (14-17 in) |
| B | 21-43cm | (8-17 in) |
| C | 20-30cm | (8-12 in) |
| D | 15-26cm | (6-10 in) |

| S | | |
|---|---------|------------|
| A | 42-52cm | (17-20 in) |
| B | 21-43cm | (8-17 in) |
| C | 25-35cm | (10-14 in) |
| D | 20-31cm | (8-12 in) |

| M | | |
|---|---------|------------|
| A | 48-60cm | (19-24 in) |
| B | 21-43cm | (8-17 in) |
| C | 30-40cm | (12-16 in) |
| D | 25-36cm | (10-14 in) |

| L | | |
|---|---------|------------|
| A | 54-66cm | (21-26 in) |
| B | 21-48cm | (8-19 in) |
| C | 35-45cm | (14-18 in) |
| D | 30-41cm | (12-16 in) |



#thechuncway

Custom-made indoor and outdoor wheelchairs with built-in postural support for children and adults with moderate to complex needs.

Designed, manufactured and hand-assembled in Herefordshire, England (in 10 working days*).

Supporting your everyday needs – and passionate about it too.

*97% all standard chairs made in 2023



Discover More

Web: chunc.com | **Tel:** 01432 377 512 | **Email:** info@chunc.co.uk